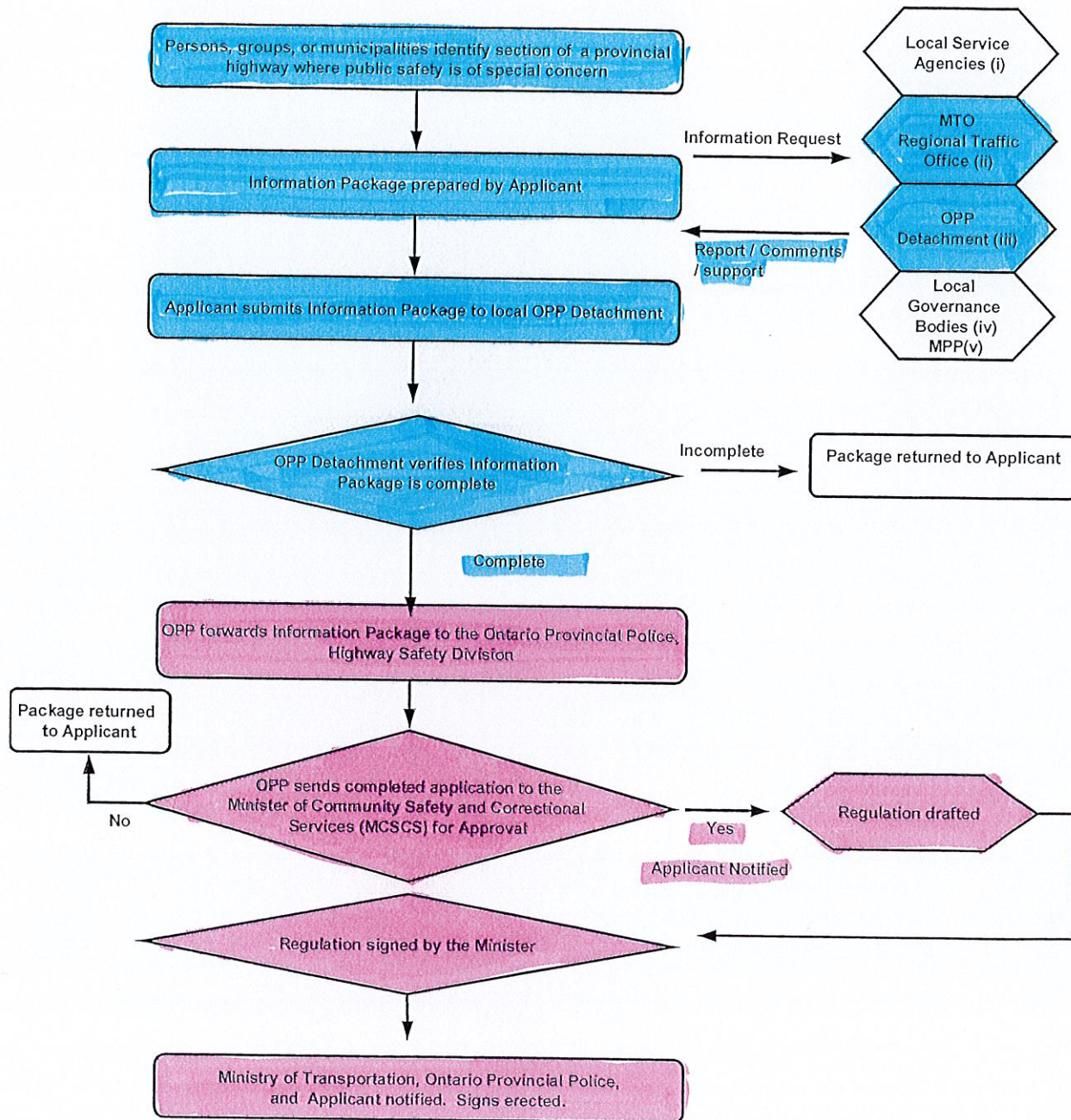


## Requesting a Community Safety Zone on a Provincial Highway



## Attachment A: Checklist for Implementing CSZs

The following check list is to be used when considering implementing a CSZ on a street in conjunction with the CSZ policy document.

Location of Road in Question:	Hwy 94 - Village of Corbeil
Date Inquiry was received:	2020
Date Inquiry was completed:	March 30 <sup>th</sup> , 2023
Name of Reviewer: :	A. Boucher, P. Eng
Reviewed by:	Police Board Services

### Section 1 – Warrants

#### 1.1 Designated Areas of Special Concern

1. Is this location a:

- School zone or in proximity to a school zone?
- Community Centre?
- High Pedestrian Traffic Location?
- Senior's Centre or Residence?

☒ Yes  
☒ Yes  
☐ Yes  
☒ Yes

No  
No  
☒ No  
No

\*High pedestrian traffic is defined as 100 pedestrians for any 8 hours of the day. If yes has been checked for any of the above options, move on to section 1.2 – Safety Warrants

#### 1.2 Safety Warrant

Warrant Criteria	Recommendation	Length of Road in Question	Meets Warrant Criteria	
Posted or statutory speed?	CSZs shall not be placed on road sections with a speed limit greater than 60 km/hr.	Insert speed limit 60 /Km/hr	<input checked="" type="radio"/> Yes	No
What is the collision ratio?	A CSZ should be implemented if the collision ration is less than 1:900 (collisions per year to AADT) averaged over 36 months	Insert collision ratio 1: >900	Yes	<input checked="" type="radio"/> No

If collision ratio does not meet warrant criteria but significant safety concerns still exist, move on to the following risk factor questions.

Prior to using the risk warrant matrix, field observations or the local Police service must verify that there is an unusually high violation rate at the subject location.

### 1.2.1 Risk Factor Components

Risk Factor	High (Score 3 points)	Medium (Score 2 points)	Low (Score 1 point)	Score
Operating Speed (km/hr)	>80	60-80	<60	2
Average Daily Volume (3,300 – 2020)	>5,000	2,500 – 5,000	<2,500	2
Presence of Community Facilities	School, Park, Playground	Retirement Area, Community Center	None	3
Presence of Sidewalks	None	On one side	On both sides	3
Truck Volume	> 5%	3 – 5%	<3%	3
Pedestrians Crossing in any 8 Hours	>25	10 – 25	<10	2
Intersections and Entrances per KM	>10	4 – 10	<4	3
Total Score for Road Section in Question				18

Warrant for consideration based on risk factor score:

15 or more  
Would be warranted

14  
Should be considered

13 or less  
Further review warranted

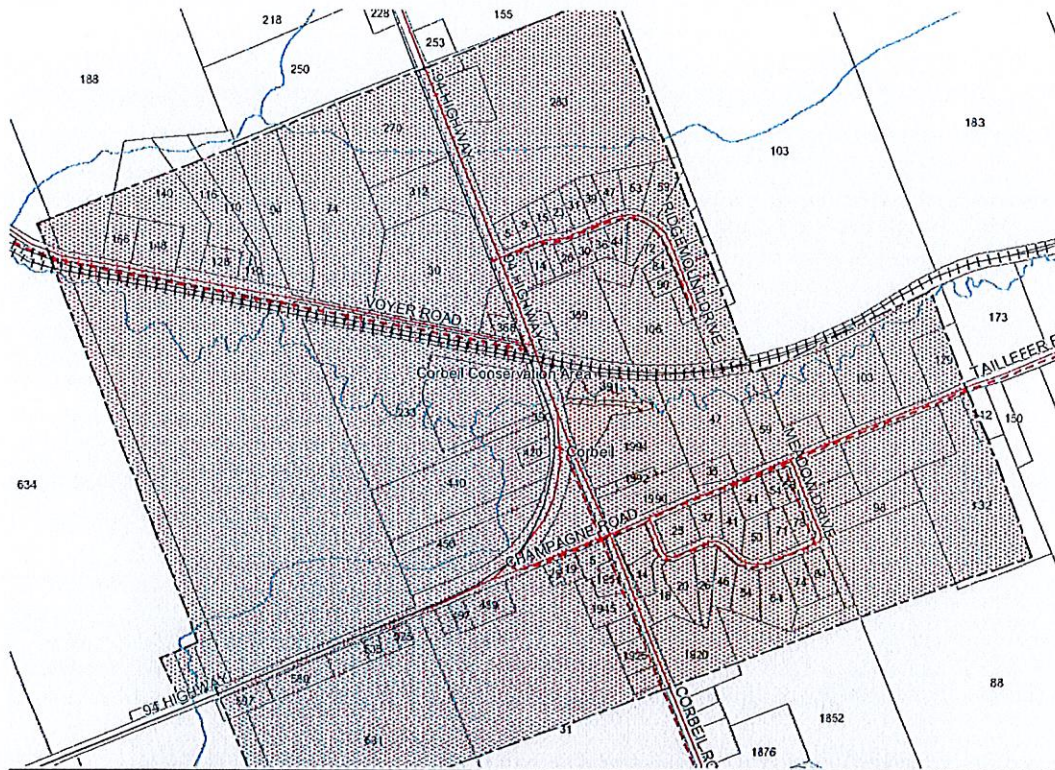
### RECOMMENDATION

This road section IS / IS NOT recommended for CSZ designation.

### Submitted for Approval

Resolution Number \_\_\_\_\_  
Date March 30, 2023

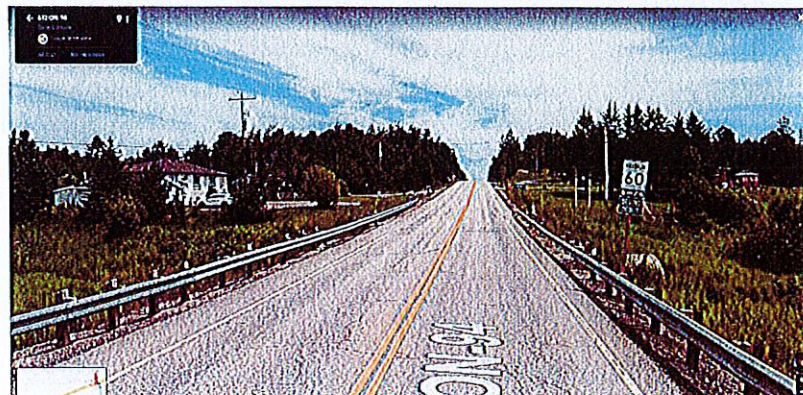
## HWY 94 AREA MAP



The Village of "Corbeil" is defined as the shaded area where Hwy 94 crosses for 1.74km.



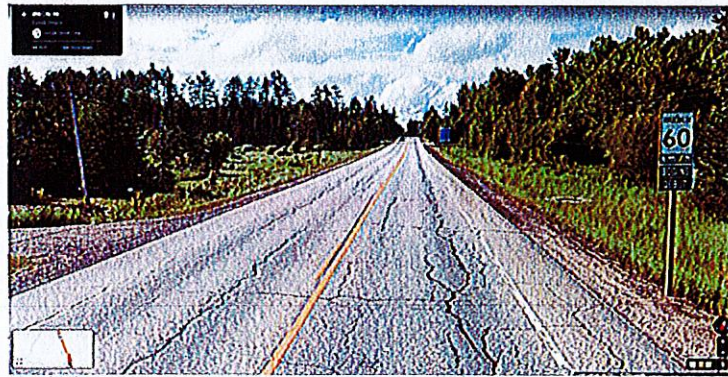
From Callander (Easterly)



60 KM/HR ZONE STARTS AT CREEK BEFORE CIVIC ADDRESS NO. 608



From Hwy 17 (Southerly)



From Hwy 17 (Southerly)

60 KM/HR ZONE STARTS AT CIVIC ADDRESS 283 INCLUSIVE

### HWY 94 CSZ FEATURES



## IS YOUR INFORMATION PACKAGE COMPLETE?

### Background Information and Site Proposal

- Key contact: OPP Detachment Staff Sergeant William McMullen / East Ferris Antoine C Boucher P.Eng.
- Detailed description of the proposed Community Safety Zone site: Hwy 94 within the Village of Corbeil for a distance of 1.74km.
- Hours, days of the week, and months of the year during which the Zone should be active: 24/7

### Site Justification

- Detailed description of the public safety issues associated with the site: The Village of Corbeil is divided by Hwy 94 that cuts through. As the Community has grown, this center is adjacent to various facilities namely, Ferris Glen School off Voyer Road, various intersections including a subdivision, general store and gas station, Community Park Hall, Park, Outside Rink, Multi-use Court, soccer field. Furthermore, the Corbeil Fire Hall is off Hwy 94, the Cenotaph, Senior Villas, the Corbeil Church is also nearby, including other businesses.
- The adjacent Corbeil Road under the jurisdiction of the Municipality is also a Community Safe Zone.
- Ottawa Valley Railway crossing with signal lights crosses Hwy 94 within that zone.
- With Active Transportation, the heart of Corbeil is considered a Hub, with the NBMCA trails in the back, it is the center point where many cyclists and pedestrians gather. The Corbeil Park Hall belongs to the Senior Club and with the Senior Villas fronting the Highway, the pedestrian traffic has significantly increased over the last 10 years.

### Consultation

- Documented input from local service agencies: email – GWRR Daryl Duquette
- Documented MTO review of issues associated with the Community Safety Zone: Correspondence email attached.
- Documented OPP review of issues associated with the Community Safety Zone: OPP Safety Division review submission April 2023
- A signed official copy of the local Municipal Council Resolution, (where appropriate), supporting the Community Safety Zone designation request: Attached
- A letter of support from the local Member of Provincial Parliament: Attached